

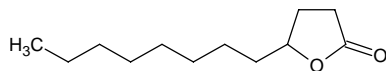
gamma-dodecalactone

γ-ドデカラクトン

Formula C₁₂H₂₂O₂

Mol. Wt. 198.30

CAS No. 2305-05-7



SEQ No. 693 ラクトン類

FEMA No. 2400

JECFA No. 235

	JFFMA	JECFA	FCC
Chemical name	gamma-dodecalactone	gamma-Dodecalactone	γ-Dodecalactone
Content (NLT)	96.0 % (GC)	97.0 %	97.0 % GC(M-1a)
Refractive index	1.447-1.457 (n _{20D})	1.451-1.456 (n _{20D})	1.451-1.456 (n _{20D})
Specific gravity	0.932-0.942 (d _{20/20})	0.933-0.938 (d _{25/25})	0.933-0.938 (d _{25/25})
Acid value (NMT)	3.0	1.0	1.0
Melting/Congeealing point			
Angular/Specific rotation			
Heavy metals (NMT)			
Solubility in ethanol		1 ml in 1 ml 95% alcohol	1 mL in 1 mL 95% alc
Other requirements			
Identification*	IR :1 MS :4,5 NMR :6	IR	

*References

- 1: Joint FAO/WHO Expert Committee on Food Additive (JECFA)
- 2: Food Chemicals Codex (FCC)
- 3: 有機化合物のスペクトルデータベース SDBS(独立行政法人産業技術総合研究所)
- 4: Wiley's Registry of Mass spectral Database
- 5: NIST/EPA/NIH Mass Spectral Library
- 6: Sigma-Aldrich