

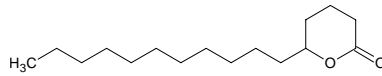
# delta-hexadecalactone

## δ-ヘキサデカラクトン

Formula C16H30O2

Mol. Wt. 254.41

CAS No. 7370-44-7



SEQ No. 1077 ラクトン類

FEMA No.

JECFA No.

	JFFMA	JECFA	FCC
Chemical name	delta-hexadecalactone		
Content (NLT)	90.0 % (GC)		
Refractive index	1.456-1.466 (n <sub>25D</sub> )		
Specific gravity	0.918-0.928 (d <sub>25/25</sub> )		
Acid value (NMT)	7.0		
Melting/Congeealing point			
Angular/Specific rotation			
Heavy metals (NMT)			
Solubility in ethanol			
Other requirements			
Identification*	IR	: 3	
	MS	: 3,4	
	NMR	:	

### \*References

- 1: Joint FAO/WHO Expert Committee on Food Additive (JECFA)
- 2: Food Chemicals Codex (FCC)
- 3: 有機化合物のスペクトルデータベース SDBS(独立行政法人産業技術総合研究所)
- 4: Wiley's Registry of Mass spectral Database
- 5: NIST/EPA/NIH Mass Spectral Library
- 6: Sigma-Aldrich